



LiveWebinar

TESTS & SURVEYS



Polls & Surveys

Name	Created At	Start	Actions
Your Poll	2017-11-30	Start	Actions
diuhgsdughaehoug	2017-1		<ul style="list-style-type: none"> <li data-bbox="901 779 997 808">Edit <li data-bbox="901 842 1061 871">Duplicate <li data-bbox="901 904 1029 934">Delete <li data-bbox="901 967 1029 996">Results <li data-bbox="901 1030 1141 1059">Run as mini poll
test	2017-1		

1. Name - here you will find a list of the polls which you created earlier
2. Created At - here you will find a date when you created certain poll/survey
3. Create New Poll – when clicking on this button you will start creating new poll (see [Error! Reference source not found.](#))
4. Start - when clicking this button, you will start the poll for the participants in your room
5. Close - clicking this button will close the Polls& Surveys menu
6. Actions - clicking this button will open a dropdown menu
7. Edit - you can edit poll/survey
8. Duplicate - you can duplicate poll/survey
9. Delete - you can delete the poll/survey you don't need anymore
10. Results - here you will find the votes of the participants
11. Run a mini poll – this will open a poll in the window below the chat (see [12. Mini Poll Window](#))

Create New Poll

The screenshot shows a 'New Poll' form. At the top right is a close button (X in a circle) labeled 5. Below the title 'New Poll' is a horizontal line. Underneath is the label 'Poll Name:' with a red circle 1 pointing to it. Below the label is a text input field. At the bottom left is a blue link 'Add Questions >' with a red circle 2 pointing to it. In the center is a blue 'Save Survey' button with a red circle 3 pointing to it. At the bottom right is a white 'Cancel' button with a red circle 4 pointing to it.

1. Poll Name - here you add name of your poll/survey
2. Add Questions - here you are adding questions to poll/survey (see [Error! Reference source not found.](#))
3. Save Survey - this button directs you to add Questions Menu
4. Cancel - If you don't want to create poll click this button
5. Close - If you don't want to create poll click this button

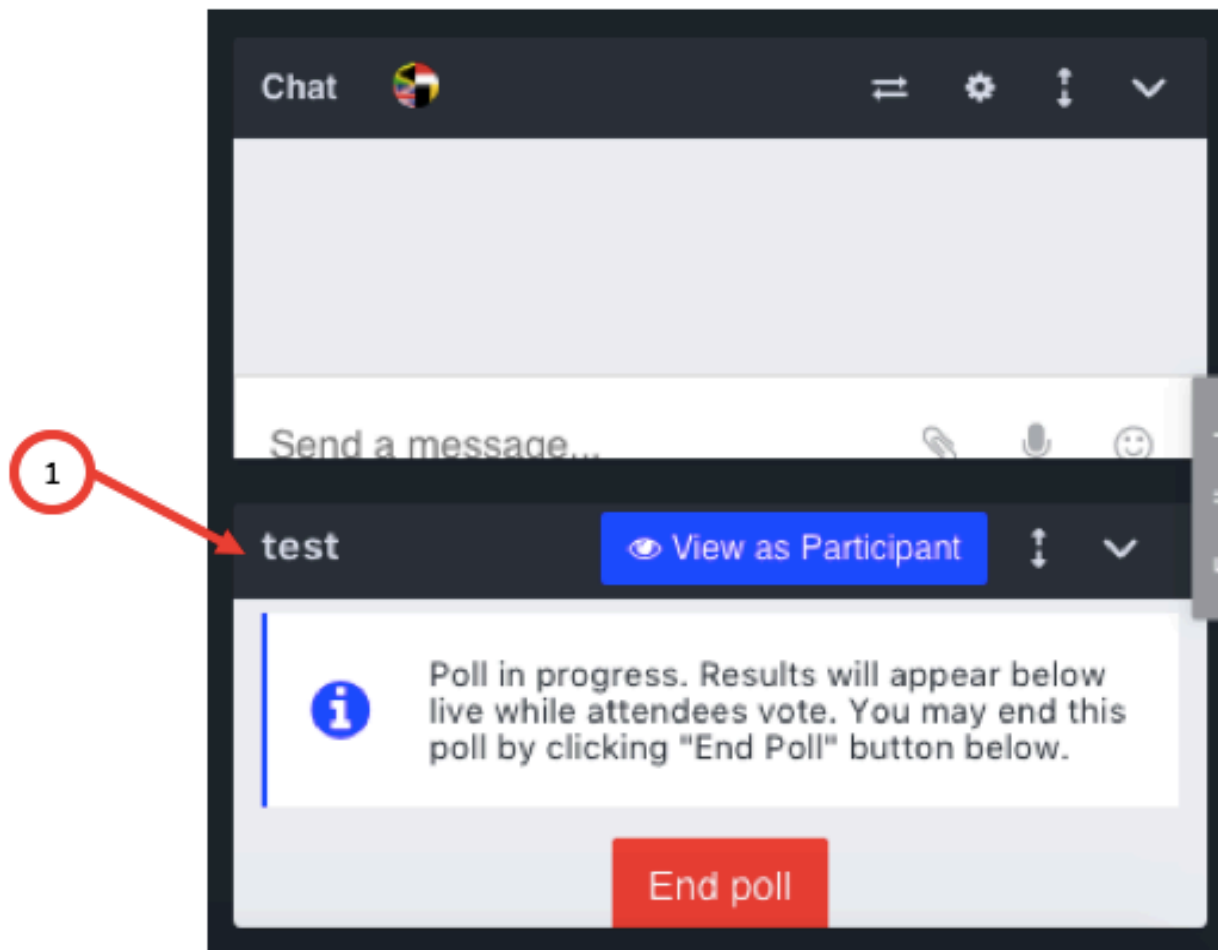
Add Questions Menu

The screenshot shows the 'New Poll test 2' interface. It includes a '1. Question:' field with a text input and icons for adding files (8), audio (9), and emoticons (10). Below the question field are three 'Answer Type' buttons: 'single', 'multi', and 'open'. There are two 'Answer Text' input fields, each with file, audio, and emoticon icons, and a trash icon. A '+ Add Answer' button is located below the answer fields. At the bottom, there are navigation links: '< Poll details', 'Remove question', and 'Another question >'. At the very bottom, there are two buttons: 'Save Survey' and 'Cancel'.

1. Question - you add your question here
2. Answer type - you can choose from three kinds of answers. "Single" - means that the attendee can choose only one answer. "Multi" - means that attendee can choose few answers to one question. "Open" - means that the attendee needs to give his/her answer.
3. Answer Text - you add possible answers to your questions here
4. Add answer - if you need more than two answers please click this button to add another answer
5. Poll Details - give you the poll info. Remove question – delete the question you don't need. Another question - adds another question to your poll/survey
6. Save Survey
7. Cancel - if you don't want to create poll click on this button
8. Add file question - you can also add file answer
9. Audio file question - you can also add audio file answer
10. Emoticons – you can use emoticons in your questions and answers

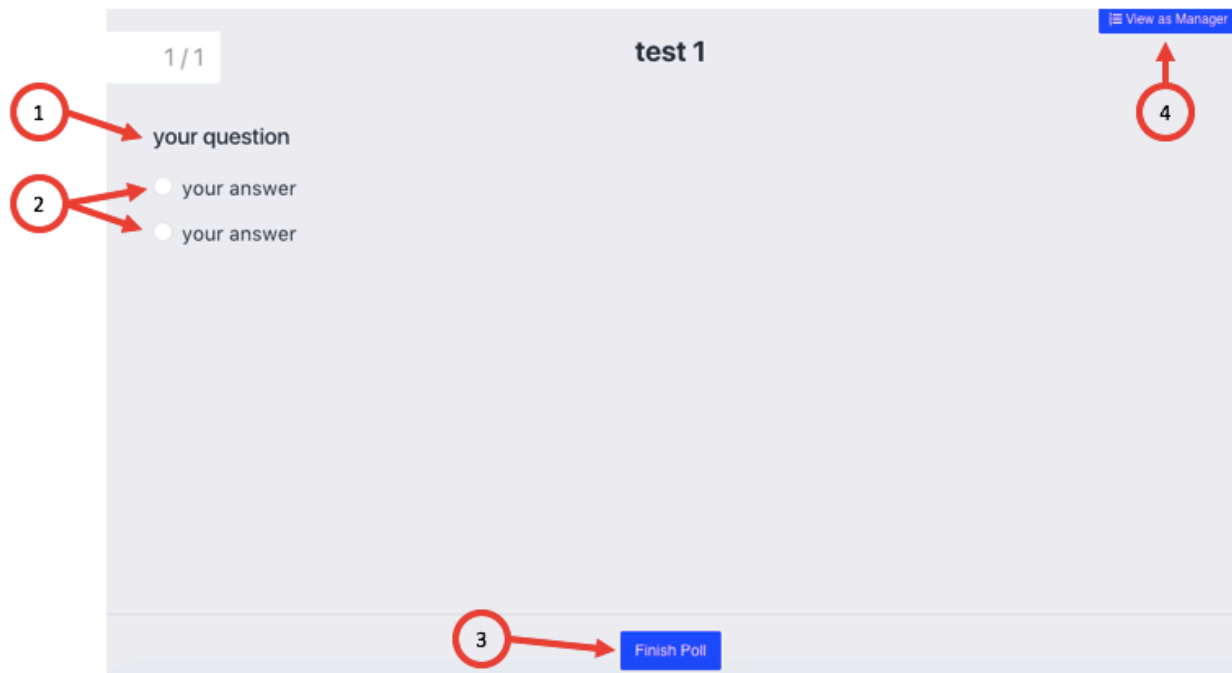
11. Close

Mini Poll Window



1. Mini Poll window under the Chat window

Poll window – participant view



1. Question
2. Answers
3. Finish poll - when you answered all the questions you click it
4. View as Manager - when you are a Host or Presenter who started the poll you can also view it as its manager